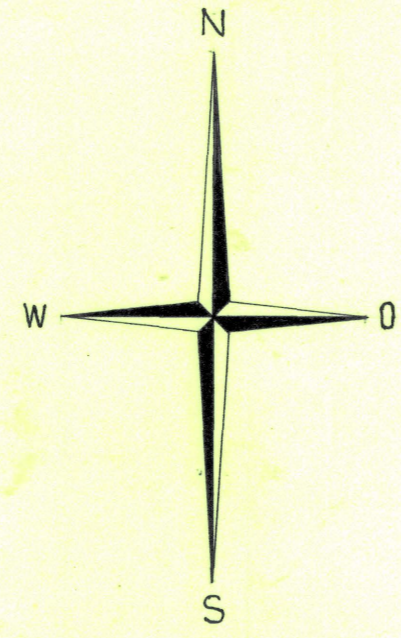


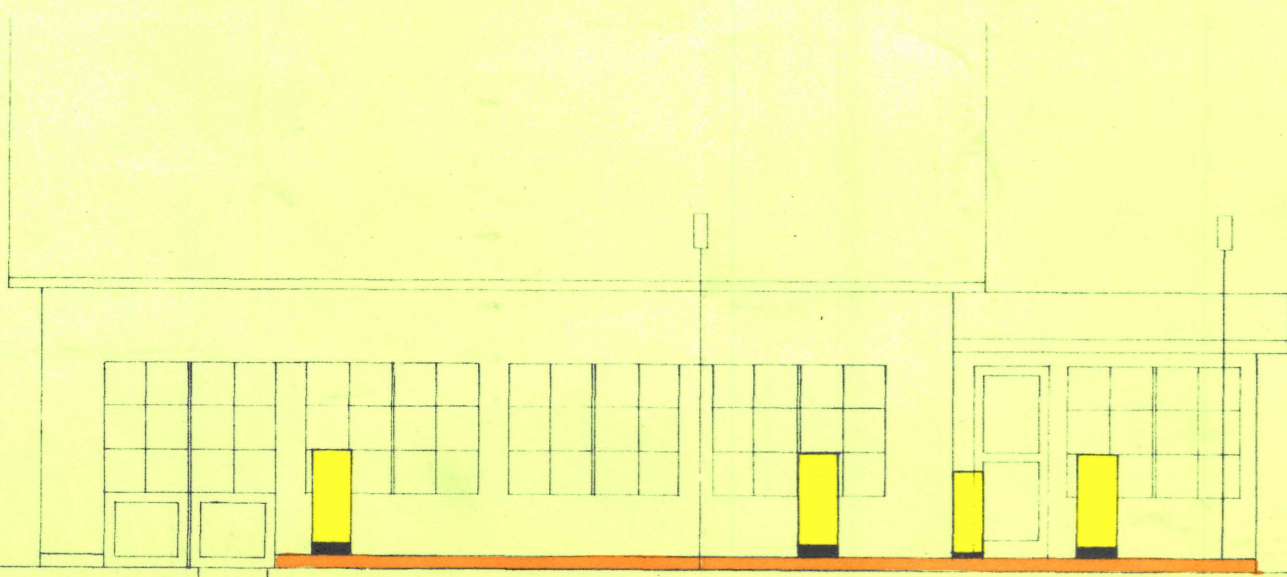
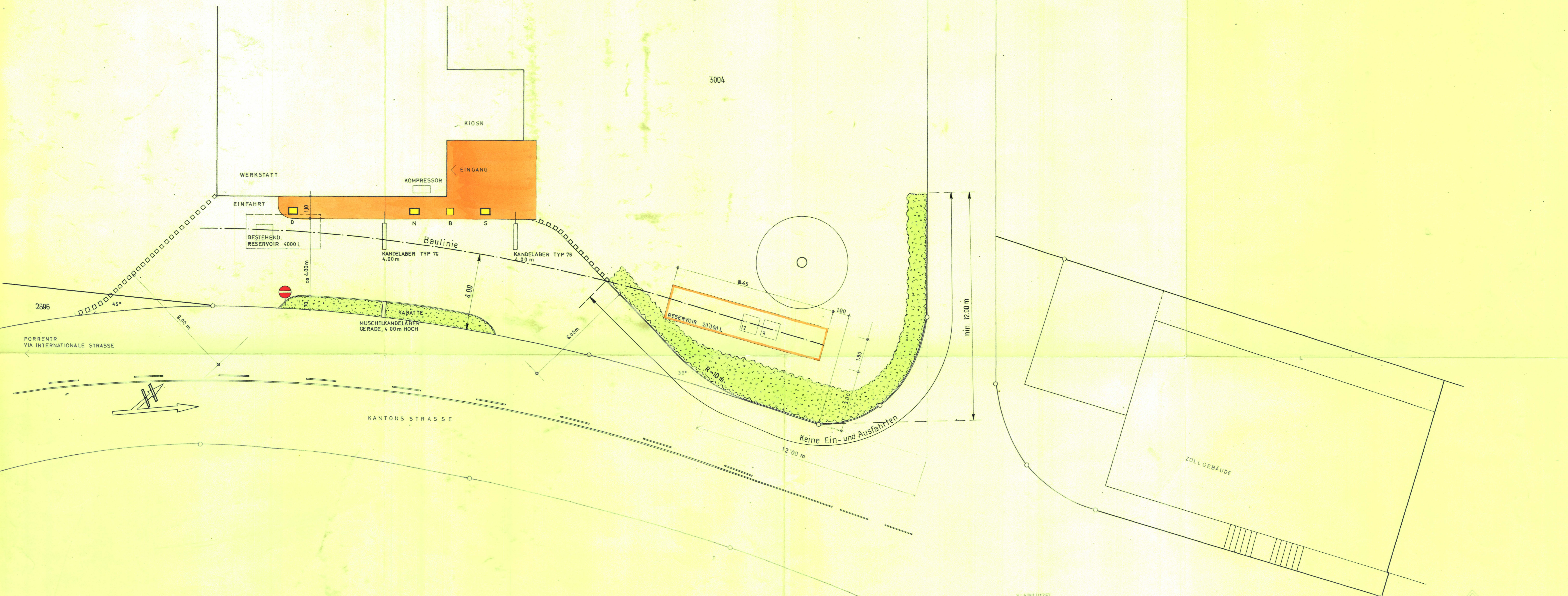
PLAN NR	77	SERVICE - STATION	KLEINLÜTZEL
DATUM	22.7.1960	SITUATION	MST 1:100
BEZ.	EMIL DITZLER ARCH. BASEL		
DIM.	84/60		

Ergänzt durch:
Kantonales Tiefbauamt Solothurn
am 30. August 1960 Tz.

Beilage zu:
Vereinbarung vom 30. August 1960
zw. Staat Solothurn (Bau-Departement)
und Herrn Urs Kung-Brodbeck, Kleinlützel

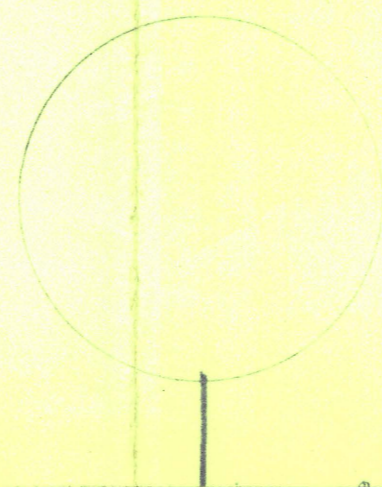


3004



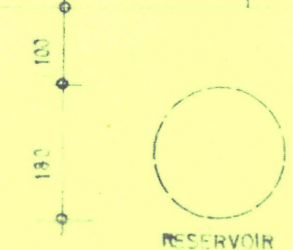
VORDERANSICHT

BESTEHEND, RESERVOIR 4000 L



SEITENANSICHT

RESERVOIR 20'000 L



RESERVOIR

STRASSE

KLEINLÜTZEL